

INTRODUCING THE NEW
ECOLUX
Sustainable sign lighting



PORTLAND
LIGHTING

Respecting the planet, **one sign at a time**

Portland Lighting, your trusted Net Zero partner.

Portland Lighting was acquired by FW Thorpe Plc in 2011.

For the last two decades, the FW Thorpe group of lighting companies has worked tirelessly to reduce its environmental impact, and we are extremely proud of the progress we have made.

We have been independently assessed as being carbon neutral since 2012 having had systems of reduction, measurement, and certified offsetting in place for over a decade.

This status has been independently assessed by a third party in accordance with **ISO 14064**, an international standard for the quantification and reporting of greenhouse gas (GHG) emissions and removals.

Meeting this standard provides independent assurance of our long-standing commitment to the environment across all our operations worldwide.

Companies, processes and products become carbon neutral when they calculate their SCOPE 1 & 2 carbon emissions and compensate for what they have produced via carbon offsetting projects.

So, in other words...our Carbon Offsetting Program has removed at least the equivalent amount of carbon as the total amount of SCOPE 1 & 2 emissions that we have generated since 2012.



5 YEAR WARRANTY



VERY COMPETITIVE PRICES

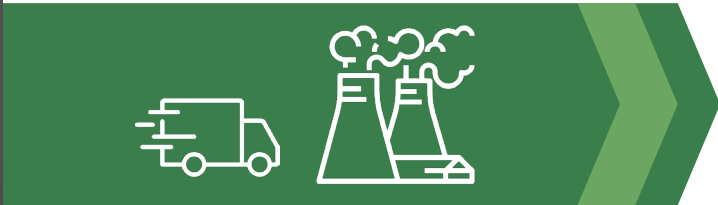


NEXT DAY DELIVERY

SCOPE 1, 2, 3 explained

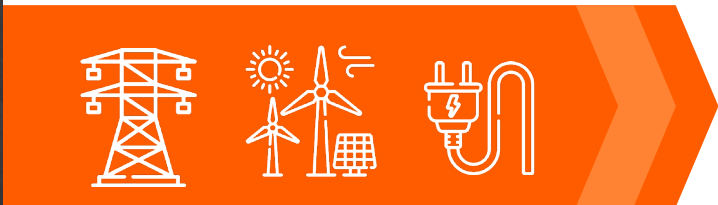
The UK is committed to reaching net zero by 2050.

This means that the total greenhouse gas emissions would be equal to the emissions removed from the atmosphere, with the aim of limiting global warming and resultant climate change. We firmly believe how we exceed along our journey towards Net Zero, ECOLUX sign lighting will offer substantial reductions to your carbon reporting.



SCOPE 1

All direct carbon emissions generated onsite from the activities an organisation owns or controls.



SCOPE 2

Indirect carbon emissions generated from purchased energy. These emissions are caused by the reporting company, but are not directly under its influence.



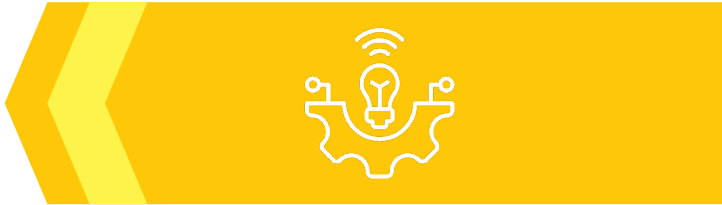
SCOPE 3

All other indirect emissions generated up and down the value chain but not controlled or owned by the organisation.



Circular Economy

Portland Lighting is committed to creating a Circular Economy. Great care and consideration in the design and engineering of ECOLUX has been studied, ensuring Circular Economy values are followed to actively tackle global challenges such as climate change, waste, recycling, and pollution.



Technical Innovation

Our new RAPIDFIT connection allows for clipping and concealing an external IP68 connector 'plug and play' style forming longer runs of sign lighting in an instant.

Why choose ECOLUX?

ECOLUX is the foremost sustainable sign lighting system designed for all users to assist in the UK's 2050 Net Zero target.

Our 6th generation LED sign light, ECOLUX has been meticulously researched and offers 14 new innovations respecting a Circular Economy and aiding to reduce CO₂ emissions for all.

ECOLUX is sealed to IP66 and is simple to install with its 5 way Multi adjustable brackets able to orientate horizontally or vertically to the wall.

How does our brand new ECOLUX sign light help you achieve your Net Zero goals?

Example:

A retail or hospitality chain with **1000 sites**, each with **10 metres** of sign lighting per site.

10,000 metres at **47%** less energy delivers savings of over **£70,000** per annum along with a saving in GHG emissions of **50 tCO₂e per annum** driving major reductions in your SCOPE 2 emissions.

Solar Installation

Our extensive Solar Installation at Portland Lighting's modern 15,000 sq. ft factory provides 48% of its energy and has saved over 75 tonnes of GHG emissions since its commission. All other energy used on site is from renewable resources.

90% Plastic Reduction

90% reduction of plastic packaging by using 100% recycled, & 100% recyclable, biodegradable globular embossed paper. Delivered next day from order in 100% recycled cardboard tubes via our courier partners devoted to Net Zero by 2050.

Castings

All our BS1490 LM6 Die Castings are 100% recycled as aluminium and can be recycled endlessly truly facilitating a circular economy.

Sealed to IP66

Our new magnifying glazing lens is co-extruded with a Thermoplastic Elastomer (TPE) to offer an outstanding seal to prevent dust and water ingress.

Powdura eco from plastic to powder

Plastic waste is converted into a durable polyester resin with 25% pre-consumer rPET. Each pound of Powdura Eco uses the equivalent of sixteen 16-oz recycled bottles while matching the performance of conventional coatings. Its lower-temperature, faster curing also reduces energy use and supports our net-zero goals.

7.7W/metre LED strip

Our superb new LEDs reduce energy consumption by an outstanding 47%. Extensive research & development has produced an LED tape, with outstanding and unrivalled performance targeted at optimum illumination for signage. The lower power means less requirement for gear trays in longer runs together with massive energy saving benefit.

All key points on this page are colour-coded to highlight any specific technical and sustainable improvements.

Relevant explanations for each colour are located on the reverse side of this brochure.

TM66 certified 2.6



ECOLUX is the UK's first sign light certified with an excellent TM66 score of 2.6, a framework developed by CIBSE (Chartered Institution of Building Services Engineers) promoting circular economy principles in sustainable lighting.

Makrolon re 90° magnifying lens

Our new magnifying glazing is ISCC+ certified pending & made from bio-circular feed stocks delivering an 85% saving of CO2e/kg of material against standard polycarbonate on the GWP (Global Warming Potential).



01



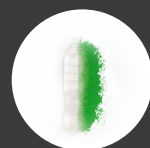
02



03



04



05



06



07



08

INTRODUCING THE NEW

ECOLUX

Sustainable Sign Lighting



14

CYCAL 80 Certified low carbon aluminium extrusion



CYCAL 80 billet used in the manufacture of ECOLUX is produced with a minimum of 80% recycled scrap aluminium content, reducing carbon emissions by 78%, significantly below primary aluminium industry average.



13

Carbon Neutral since 2012

As part of the F W Thorpe PLC group Portland Lighting has been recognised as Carbon Neutral since 2012. Third party assessment provides independent assurance of the Group's long-standing commitment to sustainability across all its operations worldwide. In 2009, FW Thorpe Plc purchased 215 acres of farmland in Wales. To date, 179,412 trees have been planted for carbon sequestration.



12

Rapidfit LM6 die cast aluminium connector

This innovative, fitter-friendly system enables longer lengths to be linked together in seconds, with the IP68 connector snapping tidily out of site without the need for internal connection.



11

ISO 9001

ISO 9001 Quality Management System, and ISO 14001 Environmental Management System certifications further endorse our commitment to produce innovative quality products with circular economy values.



10

Eco Friendly

No stone left unturned... even our ECOLUX brochure is considered, printed by a Carbon Balanced Printer, supporting the World Land Trust's efforts to protect carbon-rich habitats worldwide.

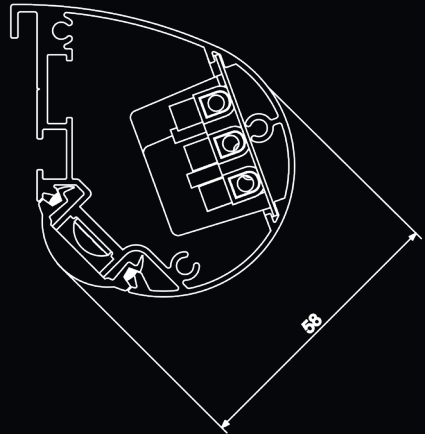


09

Wing nut fixings and cable management

No sharp edges and no tools required, we listened to the fitters! Cable is easily concealed in channels within the extrusion.

ECOLUX Specifications

LED strip	<p>Only 7.7 Watts/metre power consumption delivering 47% energy saving</p> <p>High Efficacy LED 195 lm/W</p> <p>104 LEDs per metre</p> <p>ERP Class B</p> <p>24-volt input, less current less voltage drop.</p> <p>6000k cool white or 3000k warm white 120° angle</p> <p>IP54 protected, 50,000 hours+ lamp life</p> <p>5-year Warranty</p> <p>Full CE certification and ROHS compliant</p>	
Drivers	<p>Tier 1 Meanwell and PowerLED drivers</p> <p>Fully serviceable quick release slide in Gear Trays</p> <p>Epoxy encapsulated fully isolated case with IP67 protection</p> <p>Constant voltage design</p> <p>Short circuit, over current, over voltage protection</p> <p>5-year Warranty</p> <p>Full CE certification and ROHS compliant</p>	
Light Fitting	<p>Specially designed 58mm CYCAL 80 Certified low carbon aluminium extrusion supplied up to 6000mm lengths</p> <p>Powdura ECO high performance polyester resin coating</p> <p>Concealed rear cable entry</p> <p>New 'RAPIDFIT' die cast connectors for forming longer runs</p> <p>Die cast aluminium end caps</p> <p>Standard 300mm multi brackets</p> <p>MAKROLON RE Snap-in polycarbonate 90° magnifying lens ISCC+ certified</p> <p>Casing sealed and certificated to IP66</p> <p>TM66 2.6 certified</p> <p>Full CE certificate and 5-year parts warranty</p> <p>Conforms to BS EN 60598-1:2015 and BS EN 60598-2-1:1989 'UK Deviations Only'</p>	

Bracket Projection From Sign Face



ECOLUX
Sustainable sign lighting

14 new innovations, respecting a Circular Economy.

Our Accreditations



theLIA

